

USB2.0 ATSC&NTSC TV STICK USER'S MANUAL

Part 1 Product Instruction

Thank you for choosing USB 2.0 ATSC&NTSC TV Stick!The TV Stick adopts the latest digital audio-video multimedia processing chipset and analog TV system tuner, supports ATSC HDTV signal receiving. With AV/S terminal input port, it's capable of watching video of TV/Video Tape/VCD/DVD/Video Camera through PC. It's built-in multinomial digital audio-video upgrading technology, with high anti- interfere ability, and the chroma is vivid. It is fully compatible with USB2.0 HI-SPEED and Plug & Play standard, easy to install and use. The shape is delicate for carrying on conveniently. The shell is made of thick aluminum alloy materials, with anti-deformation, anti-fall, wear-resisting characteristics. Using the product, you can capture and record video of ATSC&NTSC TV, which makes your computer a multimedia audio-video center. Enjoy your new digital audio-video life!

USB2.0 ATSC&NTSC TV STICK USER'S MANUAL

1.1 Features

- ◆ HI-SPEED USB2.0 port, Plug & Play
- ◆ Powered via USB without adaptor device
- ◆ Watch HDTV (ATSC) program or Analog (NTSC) TV programs and listen to radio on your PC
- ◆ Support up to 1920x1080(HDTV)
- ◆ Dolby Digital AC3 Audio Output
- ◆ Additional AV/S-Video input for connecting other video sources. (Such as DVD Player/ VCD/ VHS/ Camcorder)
- ◆ Support Time-Shift and scheduled recording function
- ◆ Support EPG (Electronic Program Guide)/Subtitle/Teletext
- ◆ Capture analog and digital images in JPEG format

USB2.0 ATSC&NTSC TV STICK USER'S MANUAL

1.2 Product Specification

- ◆ Support Windows2000 SP4 / XP SP2 / Vista
- ◆ Window / full-screen show
- ◆ Reach 30 frames per minute with the resolution 720x480 (NTSC DVD) reach 25 frames per minute with the resolution 720x576 (PAL DVD)
- ◆ Support 8-VSB & QAM demodulation (ATSC)
- ◆ Support Real Time Digital Video Recording (DVR)
- ◆ Support USB2.0 (Hi-Speed) standard, Plug-and-Play
- ◆ Support overlay show
- ◆ Support video-background function

USB2.0 ATSC&NTSC TV STICK USER'S MANUAL

Part 2 System Requirements

| Basic allocation | Recommended allocation |
|---------------------|------------------------------|
| CPU P4 1.7G | P4 2.0G or higher |
| RAM 128M | RAM 256M or higher |
| VGA Card 32M Memory | VGA Card, 64Memory or higher |
| Win2000 SP4 | Windows XP SP2/Vista |
| Directx9.0 | Directx9.0C |

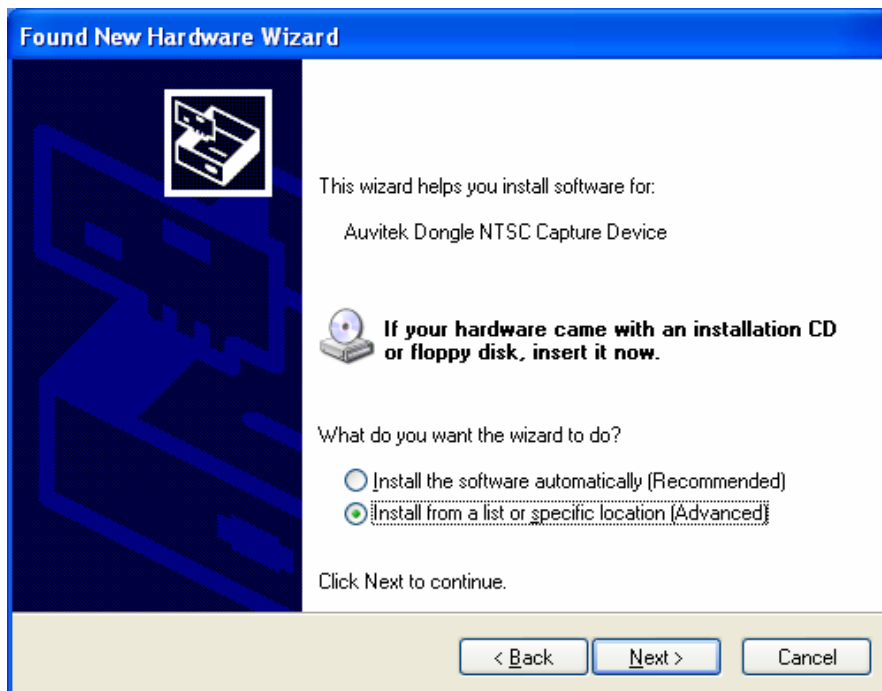
Part 3 Driver installation

- Before the Driver installed, please insert the CD into CD-ROM and connect the USB TV Stick to your PC. When the following window appears, please choose “No, not this time” and click “Next”:

USB2.0 ATSC&NTSC TV STICK USER'S MANUAL

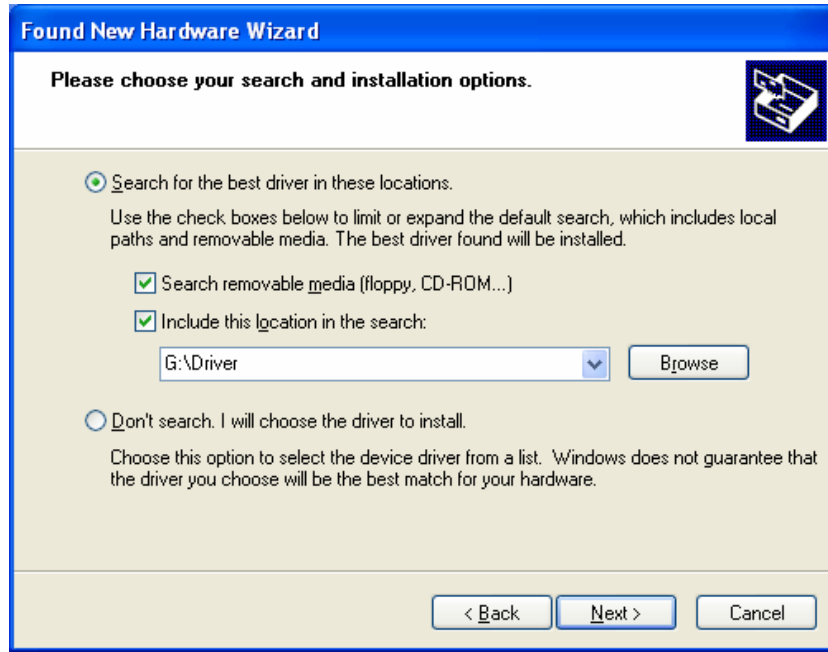


- When the following window appears, please choose the second option and click “Next”



USB2.0 ATSC&NTSC TV STICK USER'S MANUAL

- Then choose the path of driver in CD, and click “Next”:

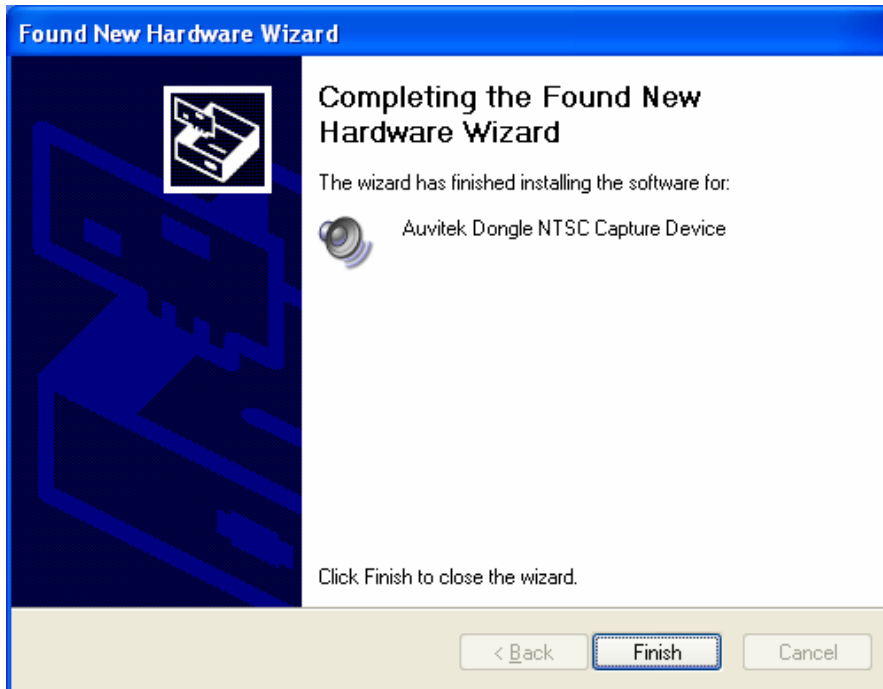


- Window will prompt the flowing dialogue box, please click “Continue Anyway”:



USB2.0 ATSC&NTSC TV STICK USER'S MANUAL

- Please click “Finish”:

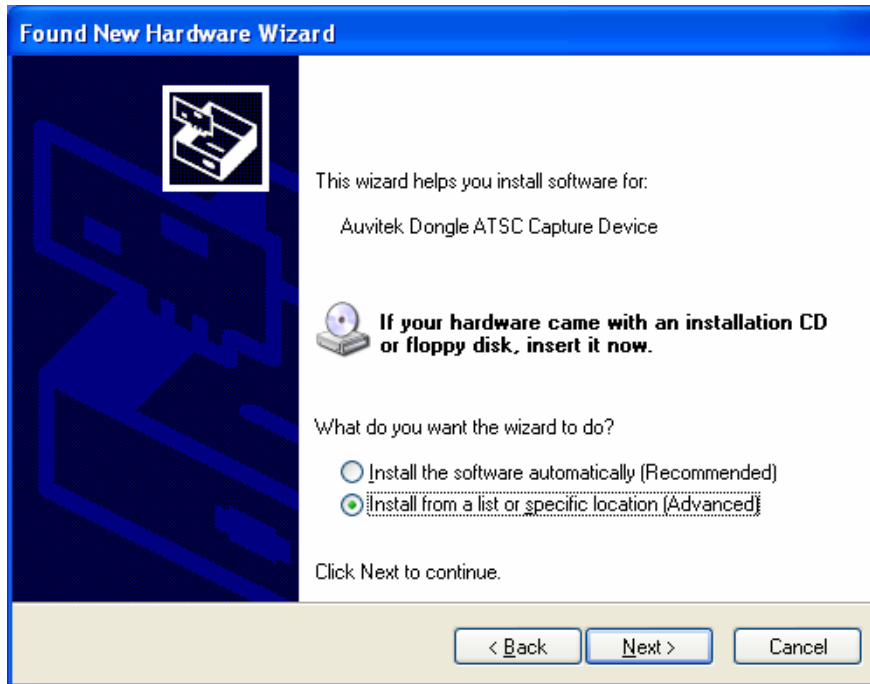


- Then windows will prompt the following window, please choose “No, not this time” and click “Next”:

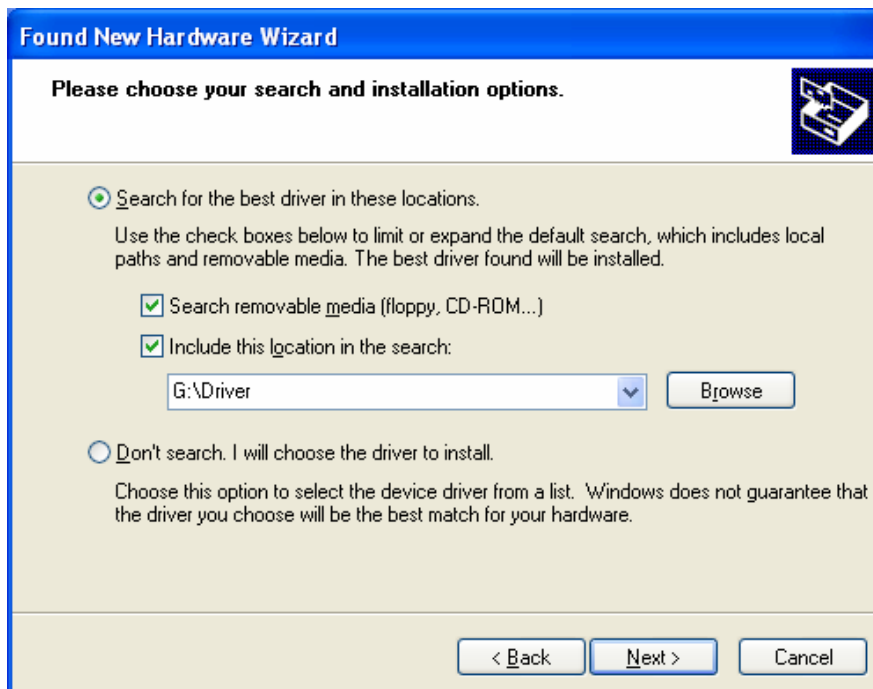


USB2.0 ATSC&NTSC TV STICK USER'S MANUAL

- Please choose the second option and click “Next”



- Then choose the path of driver in CD, and click “Next”:

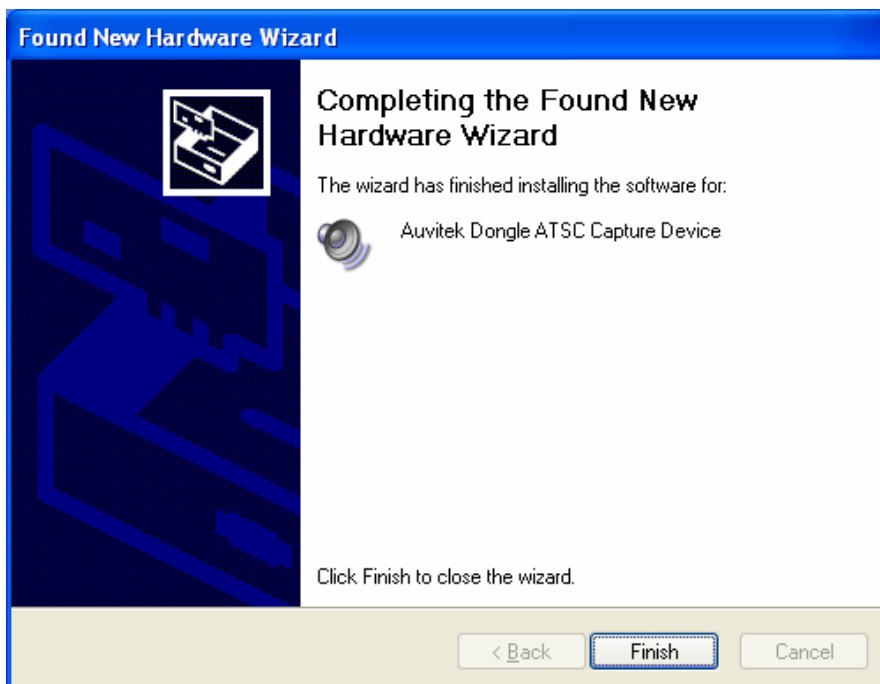


USB2.0 ATSC&NTSC TV STICK USER'S MANUAL

- Please click “Continue Anyway”:



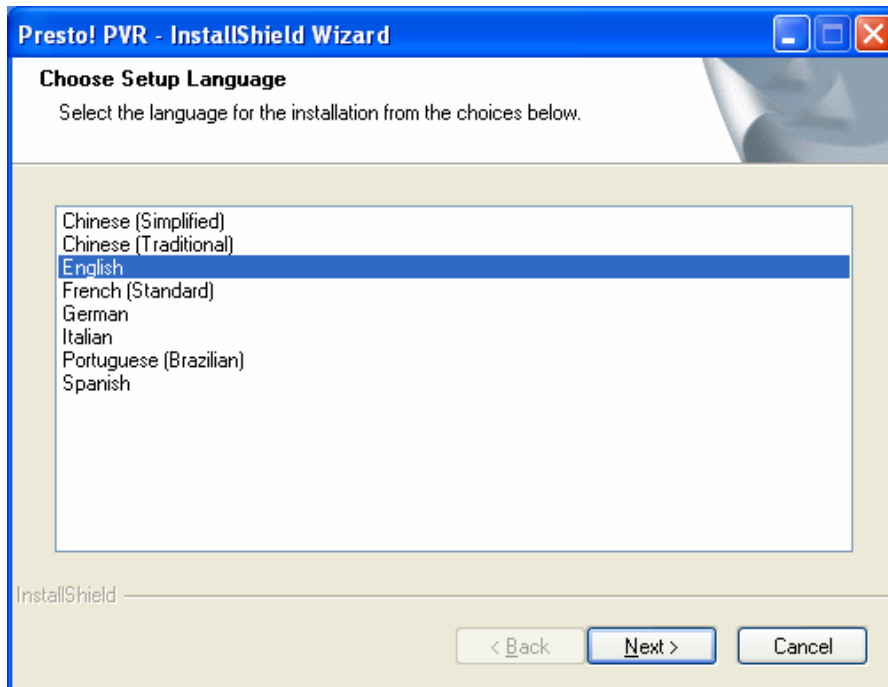
- Please click “Finish”. The driver installation is finished.



USB2.0 ATSC&NTSC TV STICK USER'S MANUAL

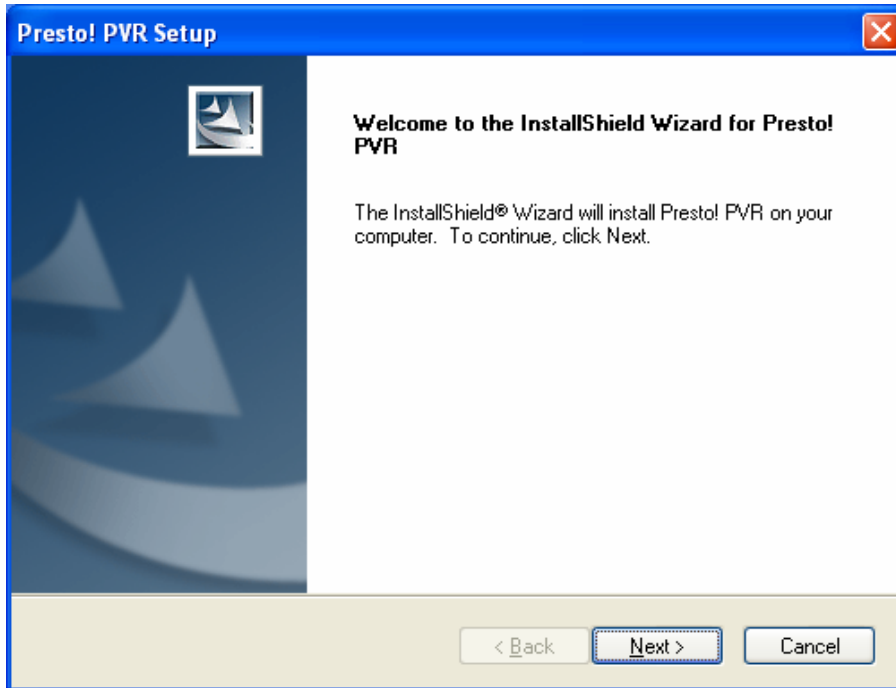
Part 4 Application installation

- Click “Setup.exe” file under the Application list in the CD, when the following window appears, select the language and click “Next”:

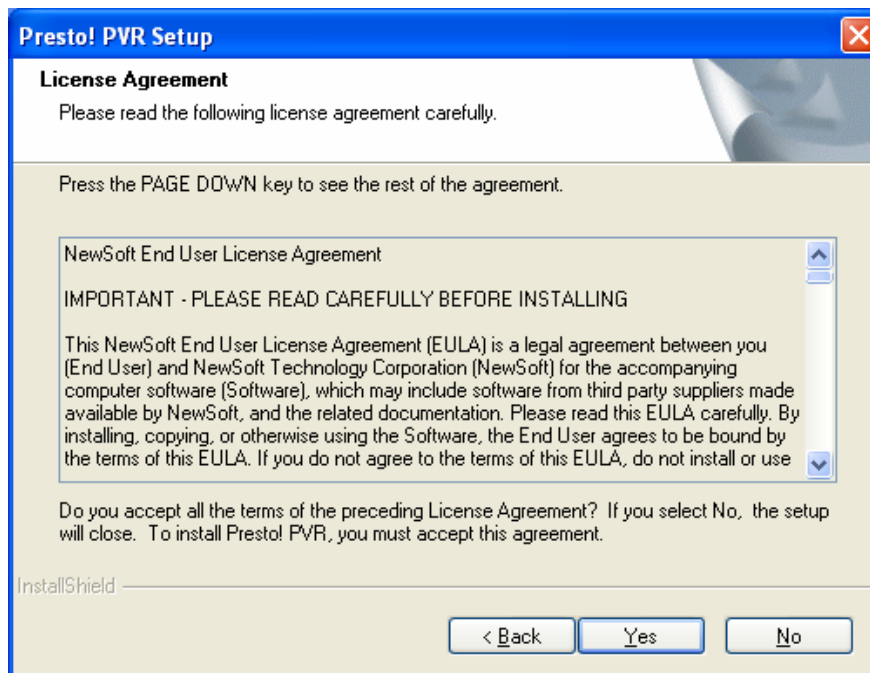


USB2.0 ATSC&NTSC TV STICK USER'S MANUAL

- When the following window appears, please click “Next”:

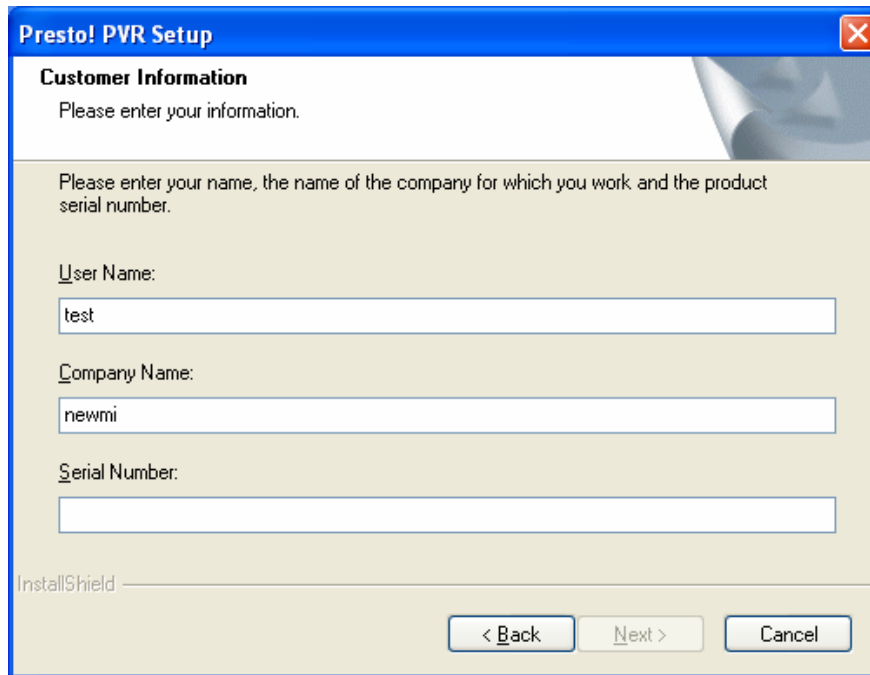


- Please click “Yes”:



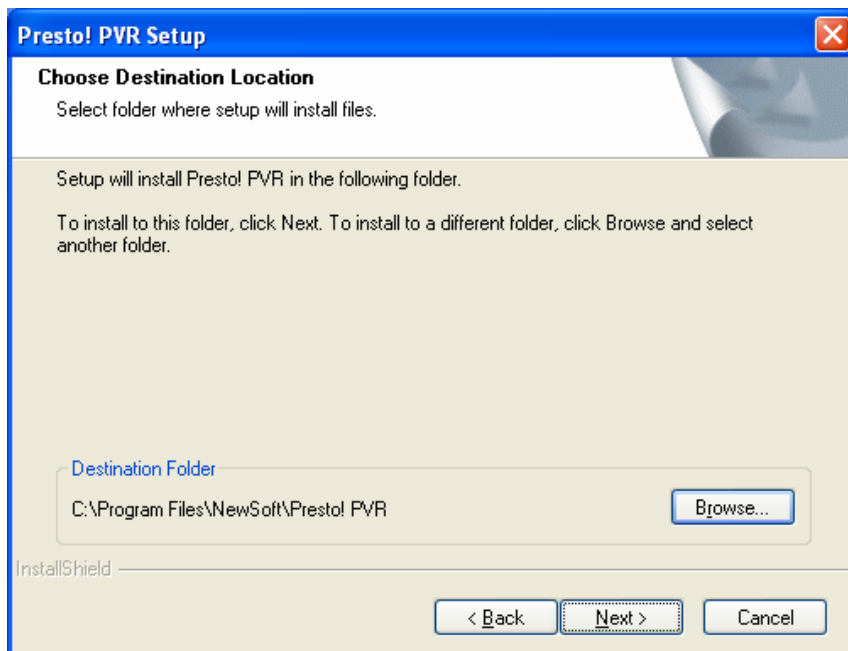
USB2.0 ATSC&NTSC TV STICK USER'S MANUAL

- Enter Serial Number and click “Next”:



The screenshot shows the 'Presto! PVR Setup' window with the 'Customer Information' section. The window title is 'Presto! PVR Setup' and it has a close button (X) in the top right corner. The main heading is 'Customer Information' with the instruction 'Please enter your information.' Below this, there is a sub-instruction: 'Please enter your name, the name of the company for which you work and the product serial number.' There are three input fields: 'User Name:' containing 'test', 'Company Name:' containing 'newmi', and 'Serial Number:' which is empty. At the bottom left, it says 'InstallShield'. At the bottom right, there are three buttons: '< Back', 'Next >', and 'Cancel'.

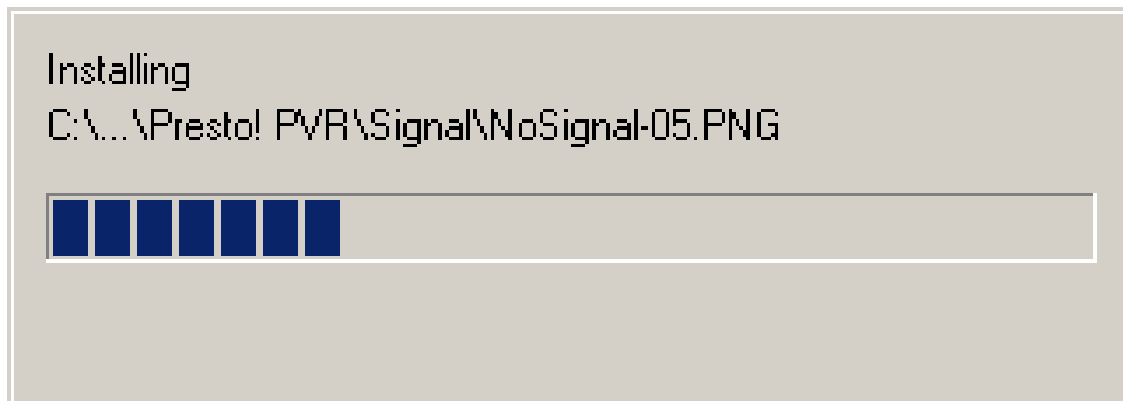
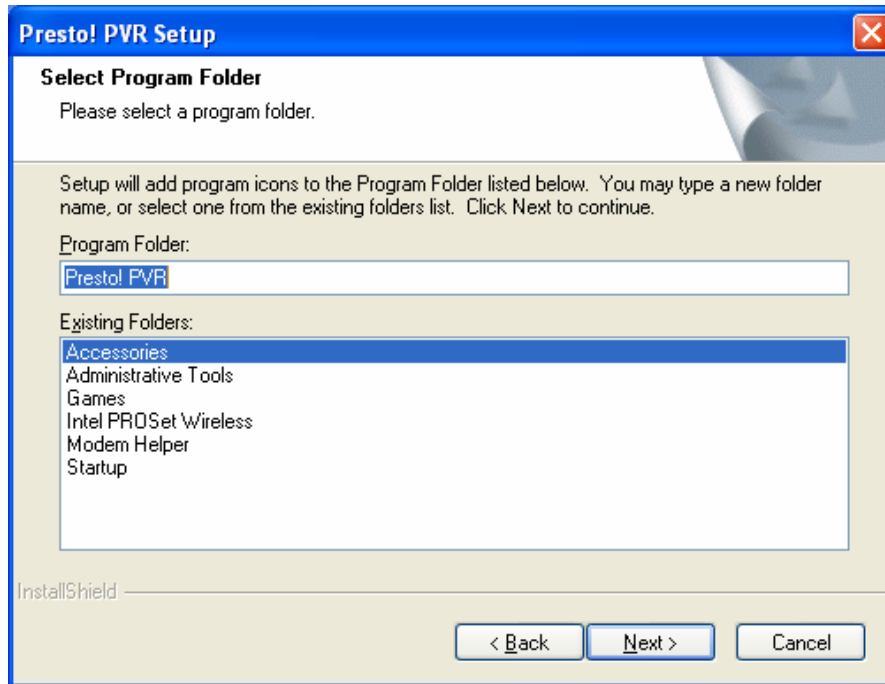
- Choose the path to install (default as system disk C:\Program Files\NewSoft\Presto! PVR), click “Next”:



The screenshot shows the 'Presto! PVR Setup' window with the 'Choose Destination Location' section. The window title is 'Presto! PVR Setup' and it has a close button (X) in the top right corner. The main heading is 'Choose Destination Location' with the instruction 'Select folder where setup will install files.' Below this, there is a sub-instruction: 'Setup will install Presto! PVR in the following folder.' followed by 'To install to this folder, click Next. To install to a different folder, click Browse and select another folder.' There is a text box labeled 'Destination Folder' containing 'C:\Program Files\NewSoft\Presto! PVR' and a 'Browse...' button to its right. At the bottom left, it says 'InstallShield'. At the bottom right, there are three buttons: '< Back', 'Next >', and 'Cancel'.

USB2.0 ATSC&NTSC TV STICK USER'S MANUAL

- Please click “Next”:



USB2.0 ATSC&NTSC TV STICK USER'S MANUAL

- Click “Finish” button and finish the installation:

