

Instruction for COTHSIMRDX01

1. Install the driver from the CD by double click the "HL-0108.exe" file.
2. Install the software from the CD by double click the "Setup.exe" file.
3. Plug in the SIM Card Reader onto the USB port. "Found new Hardware wizard" will comes up, please select "Install the software automatically (Recommended)"



4. After a successful installation, the window will recognize the Card Reader.



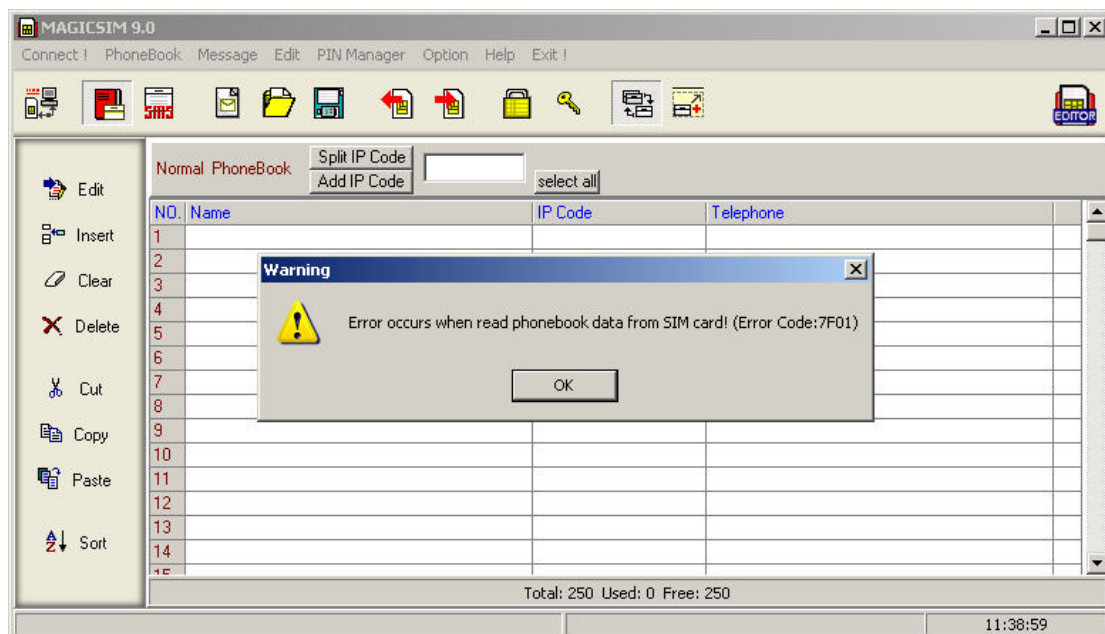
5. Now you are finished with the installation and set up. Please enjoy the product. Thank you.

FAQ:

Question:

When I use the "SIM Editor" software which comes supplied with the unit, it recognizes that I have a SIM card in the reader. I get the message: "The system is connected to card reader successfully." I know that the device is recognized on my computer, that I have the SIM card inserted correctly.

However, when I attempt to get the phonebook entries read off my SIM card, I get one of two errors: Either "Error occurs when system read phonebook records to SIM card! (Error Code: 6F3A)" or "Error occurs when read phonebook data from SIM card! (Error Code: 7F01)".



Answer:

Regarding error of 7F01:

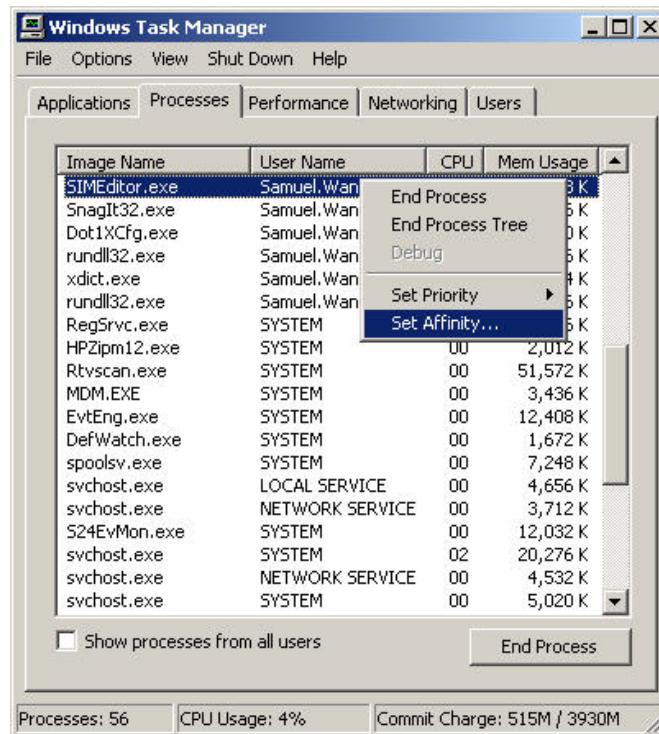
7F01 is an address code space of the chip. When it in the operation process, if it can enter the system, then that means the address can't be operated and show 7F01 error. When you install diver into any one computer of two computers, the process is too fast or intermit then if you re-install the error will occur.

Problem exist on PC with more than one CPU (DualCore, CoreDuo, QuadCore, HyperThreading ...)

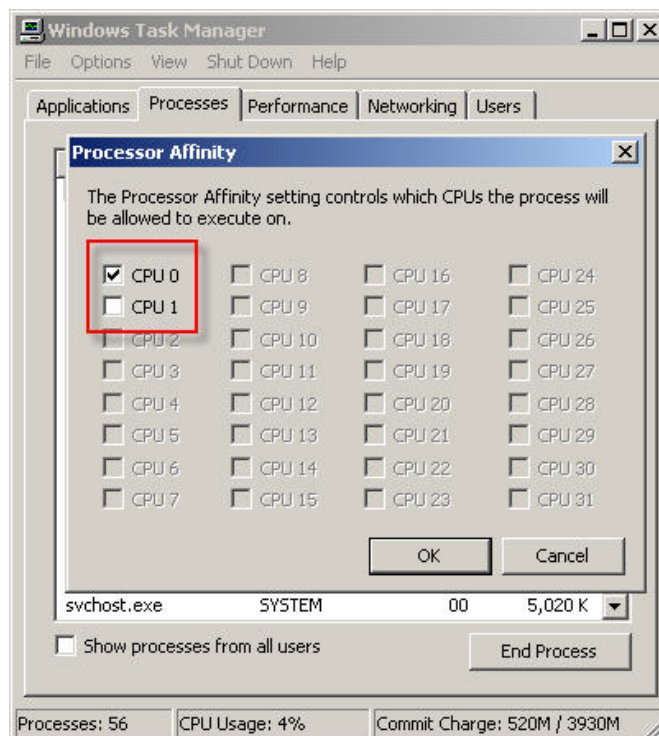
RESOLUTION:

1. Start SIM Editor
2. Open "*Task Manager*" with [Ctrl]+[Shift]+[Esc]

3. Go to "Processes" tab, Find "SIMEditor.exe", Click with second mouse button over "SIMEditor.exe", Select "Set Affinity..."



Deselect all except one of the "CPUs". (only one CPU must be with "mark")



Press again Connect! of SIMEditor.